





Discover country charm and city convenience in the Village of Erin

**Welcome to Erin Glen.**

At the headwaters of the Credit and the Grand Rivers, midway between Guelph and Orangeville is Erin, a charming small town in close proximity to big cities. Minutes from the quaint downtown, the first master-planned community, Erin Glen, is the perfect place to put down roots.

Surrounded by phenomenal schools, adventure parks, convenient shopping, a lush link to the Elora Cataract Trailways and over 500 more trails to explore, Erin Glen is where families feel at home.



# CONTENTS

4

## HOW IT ALL BEGAN

The Village of Erin has a rich history and a strong sense of community.

6

## A NEW MODERN VILLAGE

See our complete community, from a bird's eye view.

8

## FOOD, GLORIOUS FOOD

Intimate dining, convenient take-out and eclectic eateries.

10

## GETTING OUT & ABOUT

The Village of Erin boasts a wide range of shopping options.

12

## TOP OF THE CLASS

All of Erin's schools have strong roots in the community.

14

## VIBRANT COMMUNITY HUBS

Theatre, arena, skate park, a library and more, there's something for everyone.

16

## AREA AMENITIES

Theatre, arena, skate park, a library and more, there's something for everyone.

18

## CONNECT WITH NATURE

Erin's trails, rivers and community events are ready for family adventures.

20

## COMMUNITY EVENTS & MORE

Erin's trails, rivers and community events are ready for family adventures.

22

## WHERE NEIGHBOURS BECOME FRIENDS

Live in a place where your neighbours become your friends.

24

## A LASTING IMPRESSION

Harmonious streetscapes lined with leafy trees and welcoming walkups.

26

## MODERN HOMES DESIGNED FOR YOU

Cachet Homes offers distinctive homes with traditional and contemporary architecture at Erin Glen.

28

## MODERN STYLE & COMFORT

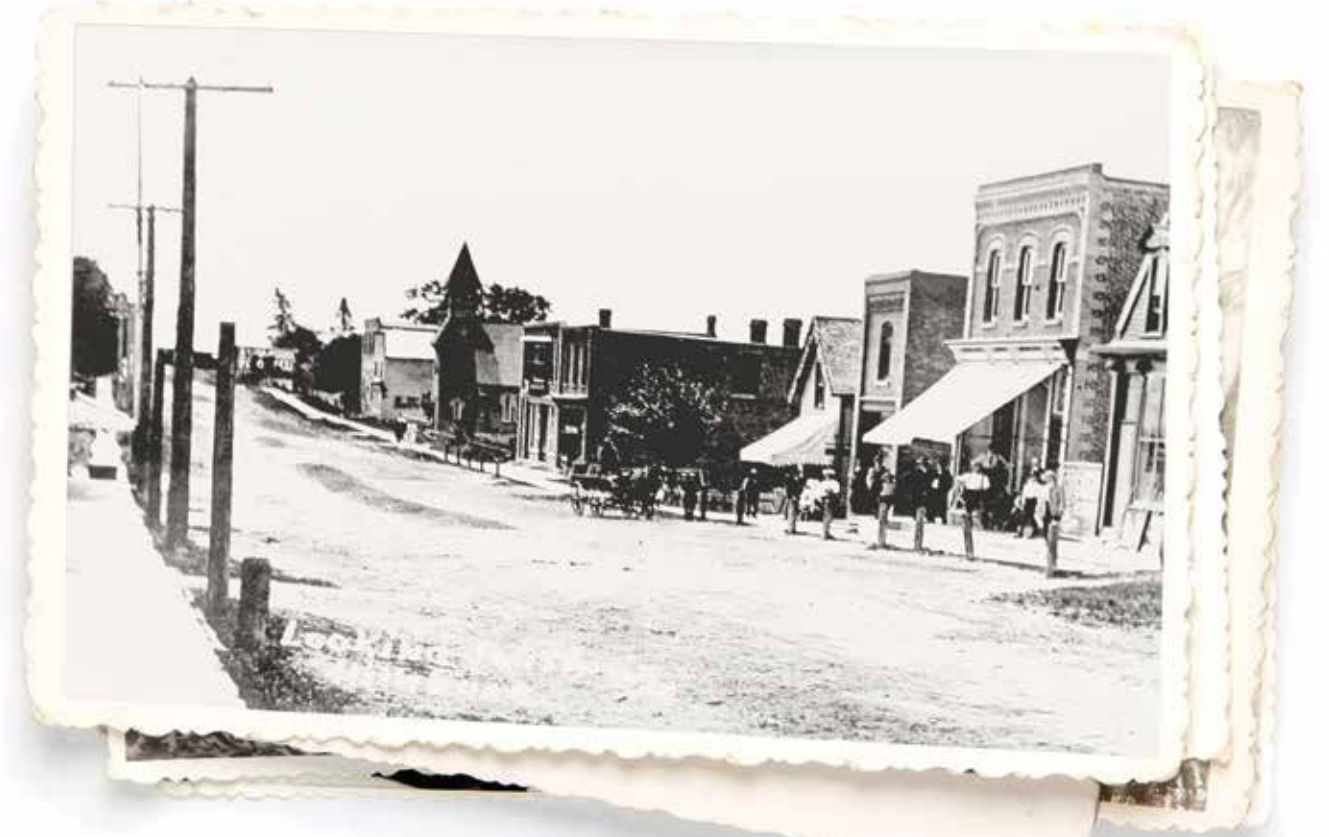
Expansive and elegant interiors with room to live, work and play.

30

## CREATING VISIONARY COMMUNITIES

Cachet has earned an enviable reputation as an award-winning developer and builder.





## How it all began...

The mill industry helped to establish Erin as a thriving economy in the 1800s. The village, located on the West Branch of the Credit River, is known for its pure cold water and trout fishing as it flows toward Lake Ontario. To the west is a drumlin, a long rounded hill deposited by a glacier 12,000 years ago, just one of the many green spaces enjoyed by Erin residents still today. With significant lands preserved in the Greenbelt, Erin balances vast forest and wetlands with a lively economy, a strong arts and sports culture and a real sense of community.



# Food, glorious food



## MADDIE HATTERS

48 Main St., Erin Village

A whimsical tea room restaurant specializing in a magical high tea experience for all ages. Celebrate a special occasion here with rich coffees, tasty teas, homemade scones, delectable desserts and an adventure like no other.

## DEBORA'S CHOCOLATES

100 Main St., Erin Village

Handmade chocolate, fudge and candies – could you ask for anything else? Stop in for a Kawartha Dairy ice cream cone, frozen yogurt and pick up some British and Dutch imported sweets, perfect for gifts.

## HOLTOM'S BAKERY

78 Main St., Erin Village

This old-fashioned made-from-scratch bakery specializes in mouth-watering breads, cookies, pastries, donuts and pies. Holtom's has been a sweet-smelling staple in Erin since 1946.

## BAILEY'S ICE CREAM

40 Main St., Erin Village

Open from spring to fall, this ice cream shop is a delightful spot to grab a cool treat on a hot day. A myriad of flavours to sample all season, one scoop or two, and all the toppings you could ask for.

## BUSHOLME INN

156 Main Street, Erin Village

Originally intended to be a hospital when it was built in 1886, the Busholme Inn was used as a doctor's office before it was converted into a hotel. Now it's a lively local eatery with a patio not to be missed.

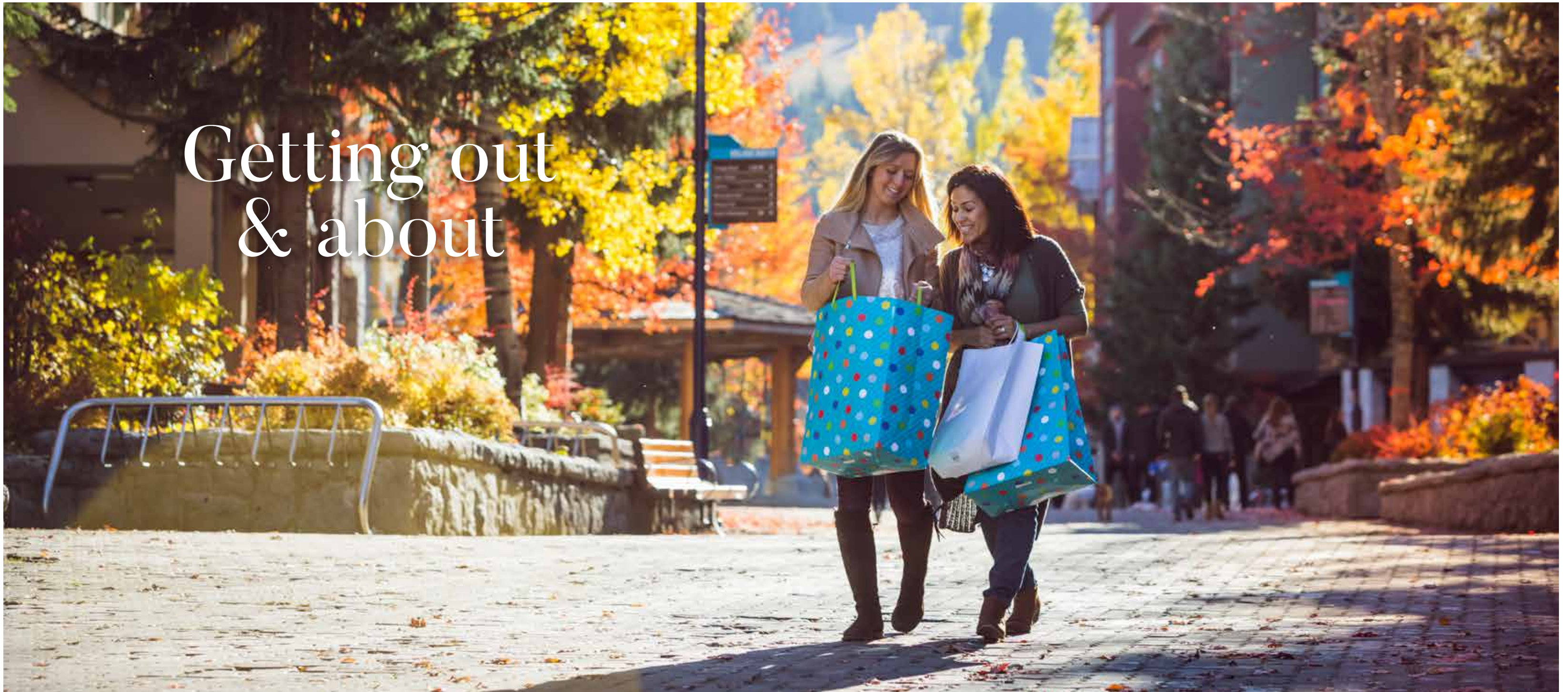
## TIN ROOF CAFÉ

4 Main Street, Erin Village

Family-owned and operated, the Tin Roof Café has been providing the jolt of caffeine everyone needs since 2015. Tasty treats and brewed coffee are perfect company when you're strolling downtown Erin.



# Getting out & about



## **WEATHERVANE HOME & GARDEN**

74 Main Street, Erin Village

Décor and design-lovers, this is your dream store. This beautiful Main Street shop has an eclectic mix of casual and contemporary home accessories to make your house feel like a home.



## **HANNAH'S**

116 Main Street, Erin Village

Boutique service and big city style, Hannah's has been building wardrobes for over 25 years, providing almost everything a woman needs right down to her shoes.

## **RENAISSANCE**

72 Main Street, Erin Village

With an appreciation for all things historical, especially fine antique, estate and vintage jewelry, Renaissance is the place to find that perfect piece to add to your collection.



## **AMORETTO'S**

798 Main Street, Erin Village

One-of-a-kind fashion and accessories are Amoretto's specialty, and don't be surprised if you fall in love with their collection of wraps, capes and shawls.







# Top of the Class

All of Erin's public and Catholic elementary and secondary schools have strong roots in the community. Erin Public School serves both the local and rural communities, with about 30% of the students living right in the village. Brisbane Public School is a dual track school, offering both English and French Immersion. A recent addition was constructed onto St. John Brebeuf Catholic School as its enrolment continues to grow. When students graduate elementary school, most head to Erin District High School, located in the heart of the village.



**ERIN DISTRICT HIGH SCHOOL**



**BRISBANE  
PUBLIC SCHOOL**



**SAINT JOHN BREBEUF  
CATHOLIC SCHOOL**



**ERIN PUBLIC  
SCHOOL**





# Vibrant Community Hubs



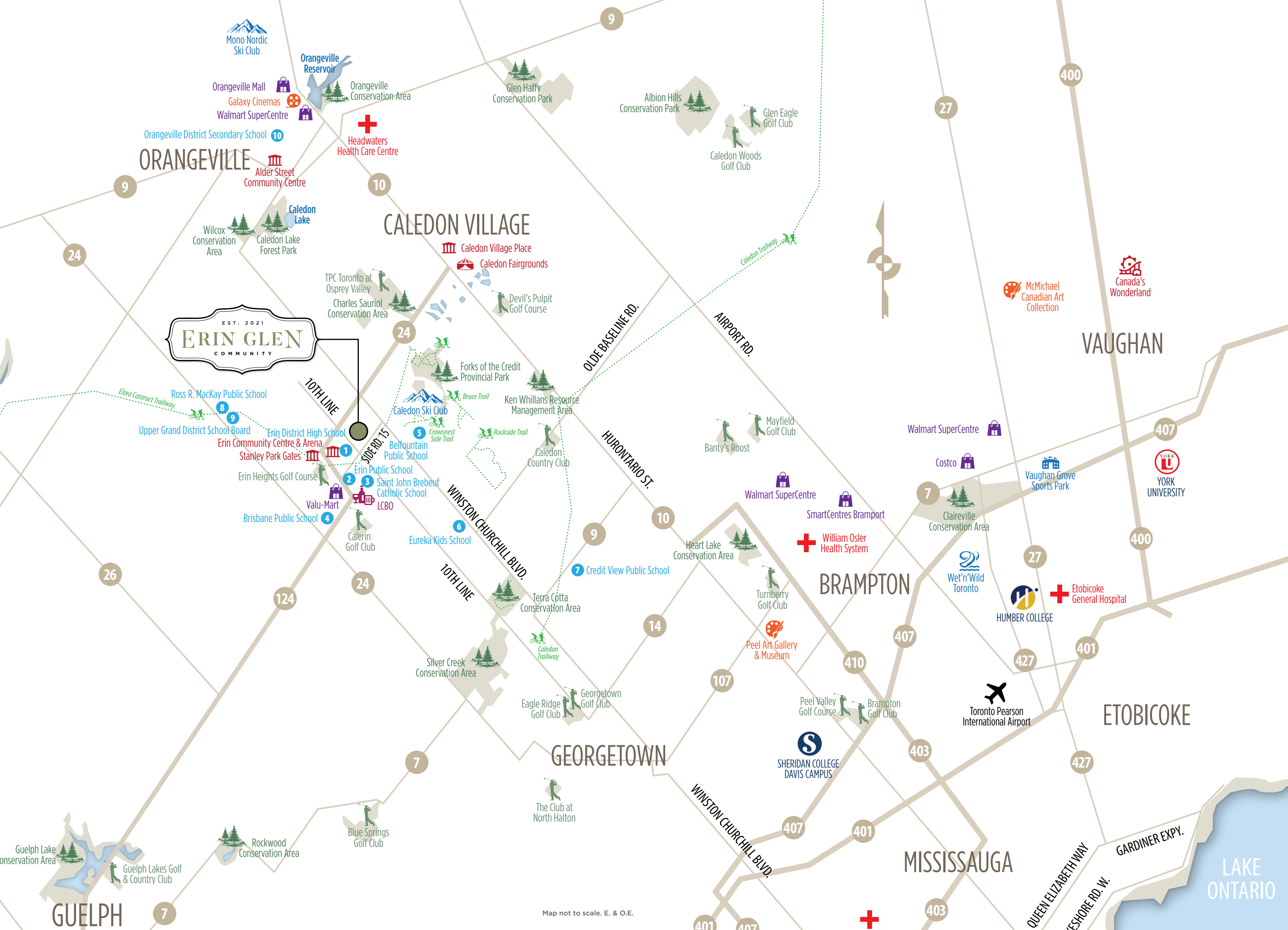
## **ERIN CENTRE 2000**

Erin Centre 2000 is a unique hub of activity. Home to the Erin Community Centre, a live performance theatre, Erin District High School, Erin Branch Public Library, a dental office, a skate sharpening shop and a nursery school.

## **COMMUNITY CENTRE**

Find fun in all four seasons at the Erin Community Centre. With an arena, a skate park, baseball diamond, tennis courts, soccer field, banquet hall and meeting rooms, it is where the community gathers.





EST. 2021  
**ERIN GLEN**  
COMMUNITY

ORANGEVILLE

CALEDON VILLAGE

VAUGHAN

BRAMPTON

ETOBICOKE

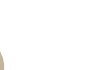
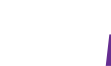
GEORGETOWN

MISSISSAUGA

GUELPH

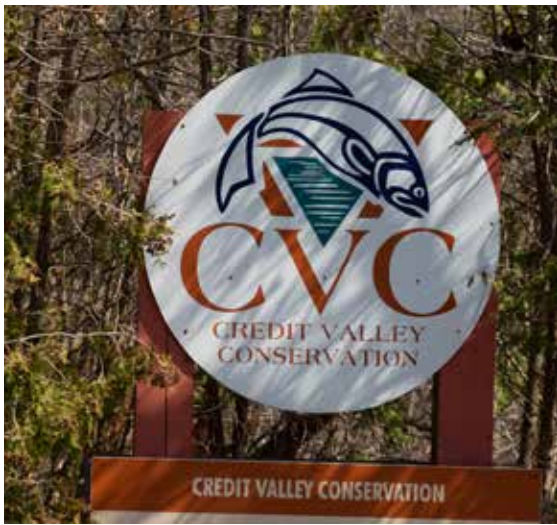
LAKE ONTARIO

Map not to scale. E. & O.E.





# Connect with Nature



The Elora Cataract Trailway passes right through town along the old railway bed and is the perfect walking, biking, horseback riding or snowmobiling adventure.

For a beautiful view of the river, Woolen Mills Conservation Area has the perfect lookout point and is a great hiking spot for the entire family.



# Community Events & more...



**1** The Erin Farmers' Market at McMillan Park is a celebration of all things fresh, bringing together local farmers, artisans and the community every Friday.

**2** Shop, dine, and celebrate the holiday season starting with Window Wonderland, Christmas tree lighting, horse & carriage rides, and shop specials. Stroll down Erin's quaint main street, and enjoy our authentic Country Christmas Welcome, bursting with activity and holiday excitement.

**3** For more than 170 years, the Erin Fair, with a midway, tractor pulls, a rodeo, fireworks and more, all organized by the Erin Agricultural Society on Thanksgiving Weekend, has always been the family event of the year.

**4** An equestrian marvel, Angelstone Stadium is a 100-acre venue that hosts a world-class show jumping tournament and competitions that attract locals and tourists alike.





\*Artist's concept only. Final park design and construction will be completed by the municipality. E. & O.E.

# Where neighbours become friends

In the Village of Erin, the new community of Erin Glen is the perfect place to put down roots. With all of the village shops, cafes, services and amenities just minutes away, Erin Glen is ideally located. Here, Cachet is offering distinctive 33.5' and 36' detached homes that are well-connected to a magnificent central park, a future school, two lush parkettes, and a lush link to the Elora Cataract Trailway.



\*Artist's concept only.



# A lasting impression

Cachet's harmonious streetscapes are lined with leafy trees and welcoming walkups to modern and stately detached homes. Large picture windows to let in natural light, convenient covered porches and with elegant entryways, Cachet homes are designed to make a lasting impression.





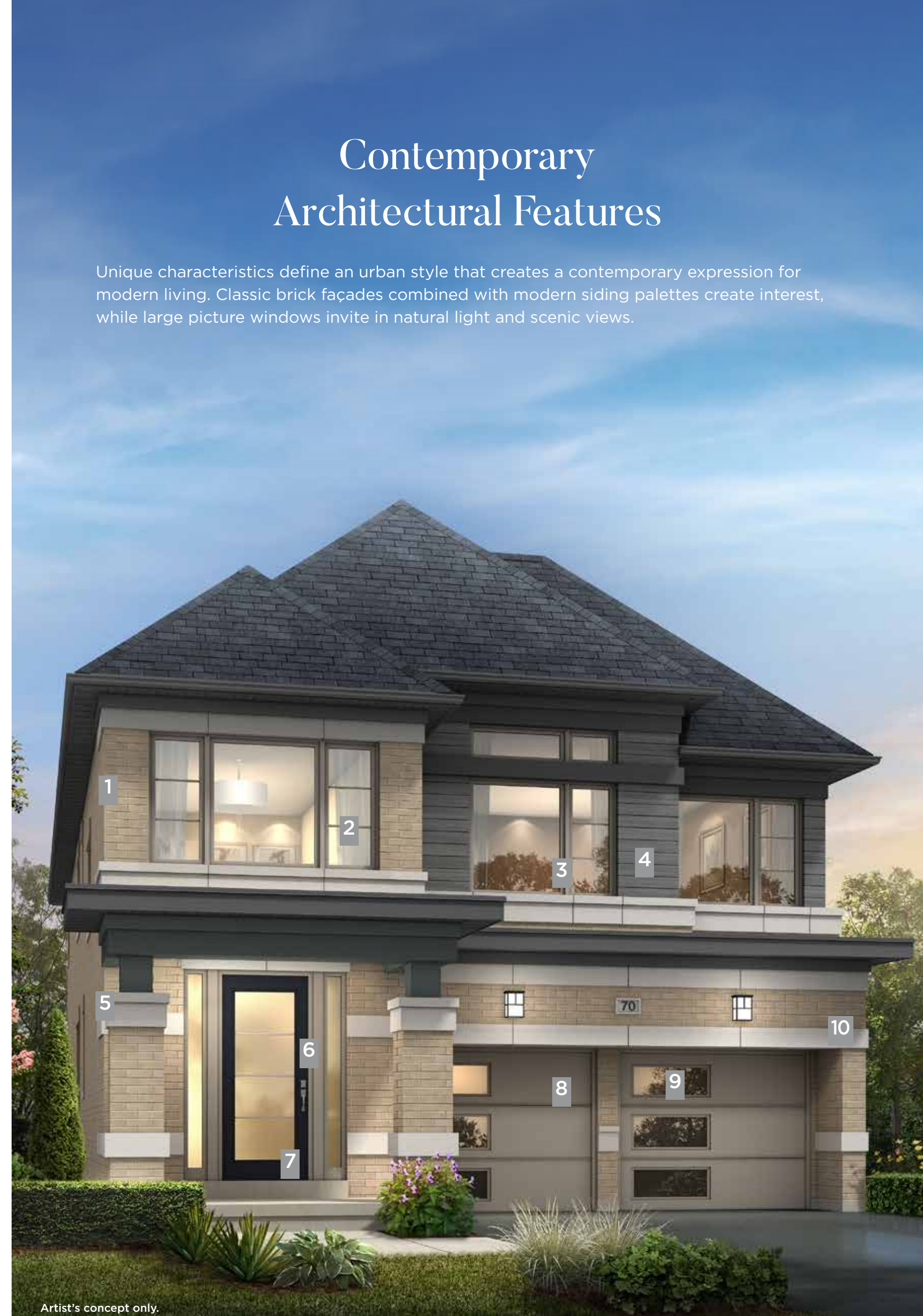
# Modern homes designed for you

At Erin Glen, Cachet presents a beautiful selection of 33.5' and 36' detached home designs to suit your needs. Featuring traditional and contemporary home designs, with full premium brick exteriors, large picture windows and up to 2-car garages. Select from up to four elevations per model and a wide array of premium exterior packages that create a harmonious, appealing streetscape.

- 1 Full premium Clay Brick Exterior
- 2 Large energy efficient vinyl casement picture windows
- 3 Premium window colours co-ordinated to exterior palettes
- 4 Decorative metal siding in premium colours
- 5 9' Main Floor ceiling heights
- 6 Video doorbell that allows you to see visitors from your smart phone app
- 7 Contemporary style 8' metal insulated front door with glass door lights
- 8 Contemporary style premium garage door with decorative lights
- 9 Smart garage door opener with wifi connectivity so deliveries can be placed inside through a touch of your smart phone app
- 10 Contemporary style, architecturally controlled exterior colour palettes

## Contemporary Architectural Features

Unique characteristics define an urban style that creates a contemporary expression for modern living. Classic brick façades combined with modern siding palettes create interest, while large picture windows invite in natural light and scenic views.

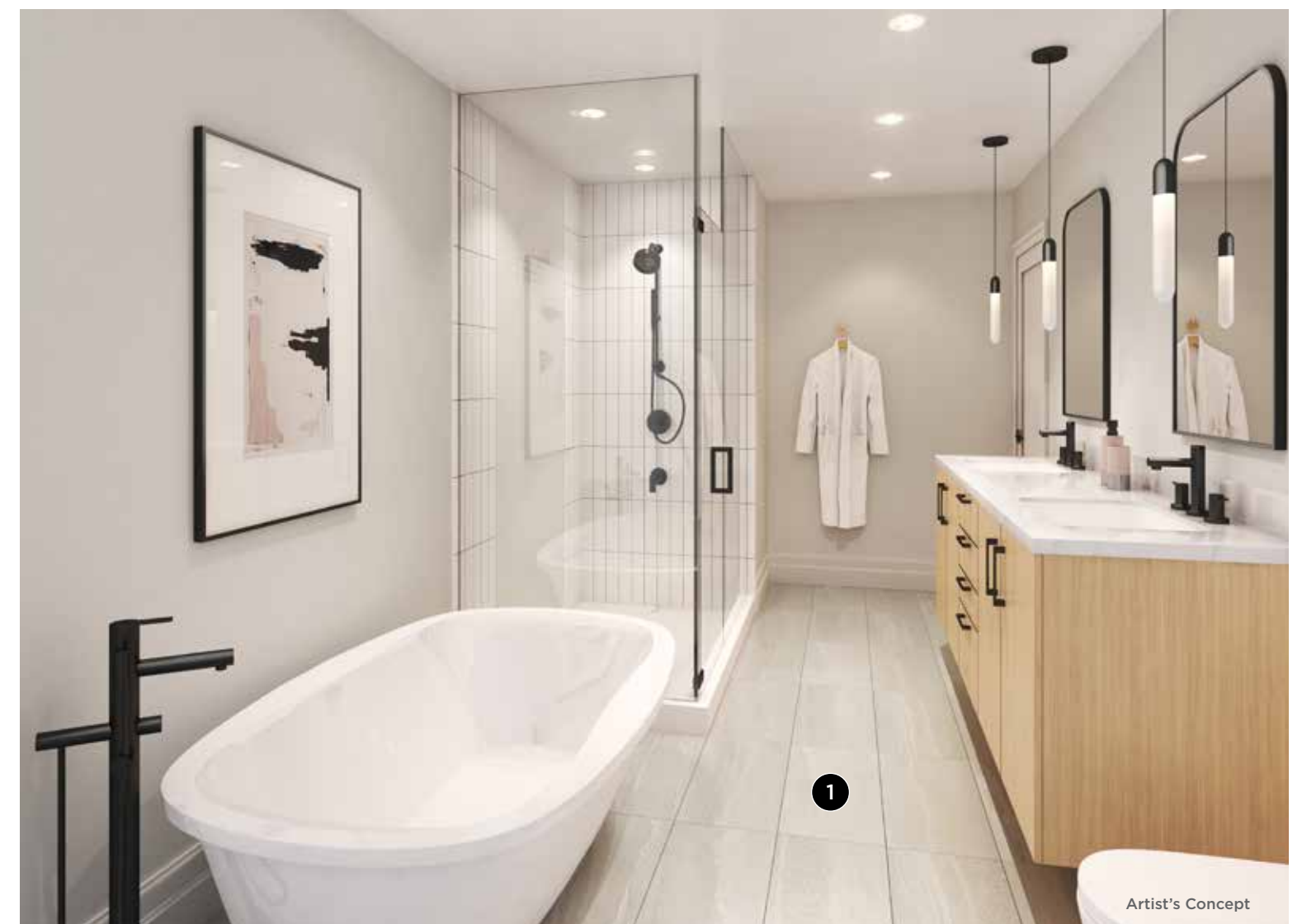






# Modern style and comfort included inside your dream home

- 1 Imported ceramic floor tiles
- 2 Wide selection of quality cabinetry
- 3 Extended breakfast counter
- 4 Extended height upper cabinets (100cm)
- 5 Choice of Granite or Quartz countertop
- 6 Double stainless steel undermount sink
- 7 Single lever pull-out spray faucet
- 8 Electrical receptacle with integrated USB port in kitchen
- 9 9' ceilings on main level







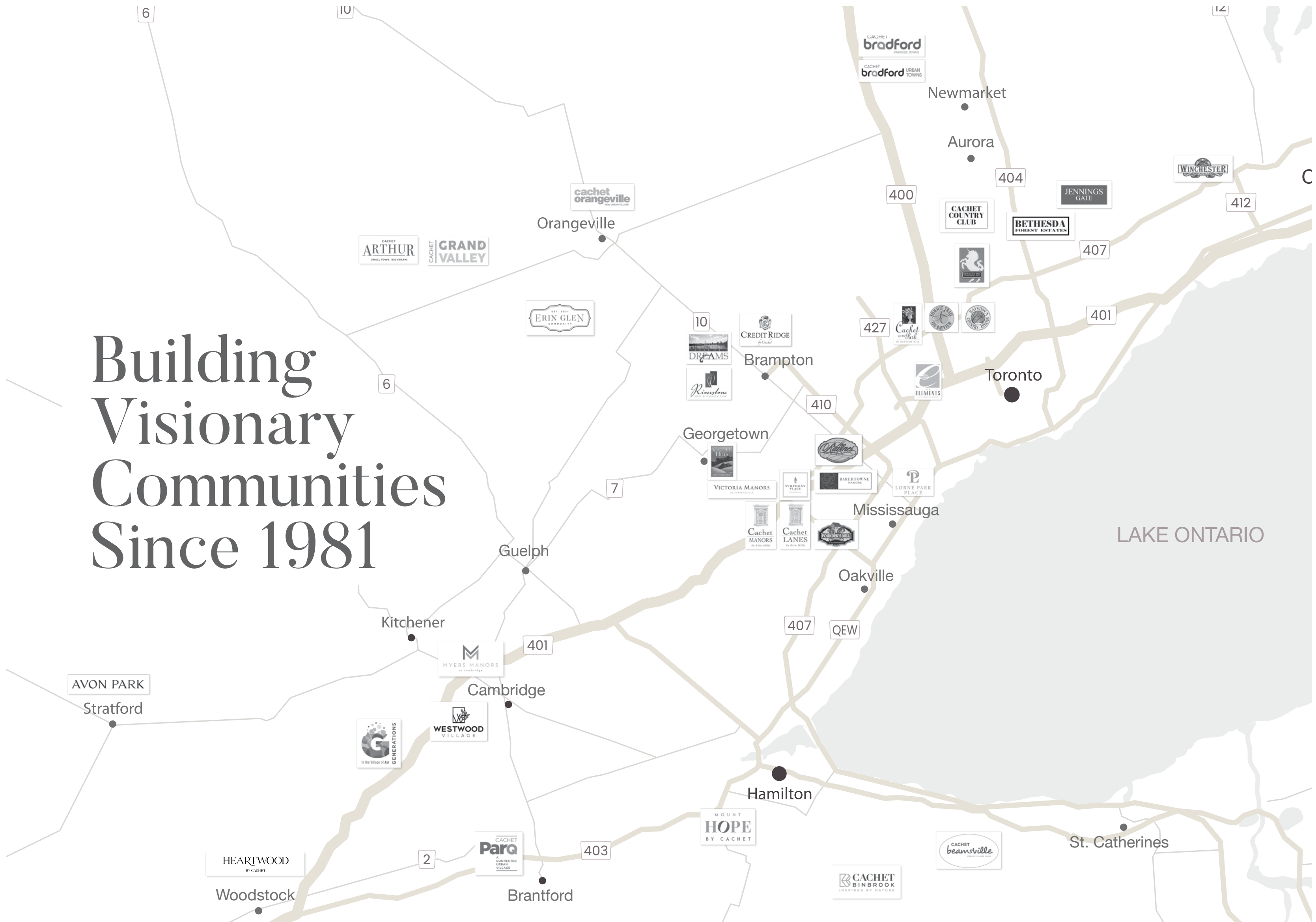
# Family Is at the Heart of What We Do

After four decades of home building excellence, Cachet has earned a reputation as an award-winning developer and builder of master-planned communities across Southern Ontario. From the very beginning, our principles have been guided by a distinctive vision of how new homes should be crafted; a vision that combines innovative architecture, superior craftsmanship, exceptional quality features and finishes, and outstanding customer care. Since 1981, Cachet has developed and built thousands of new homes—and we remain committed to enriching the lives of families by building visionary communities they will be proud to call home.





# Building Visionary Communities Since 1981







**CACHET**