

# HEARTWOOD

BY CACHET

## THE JUNIPER

ELEV. A & B | 2188 SQ FT

ELEV. C | 2189 SQ FT

# 30'

COLLECTION



Artist's Concept

ELEVATION B



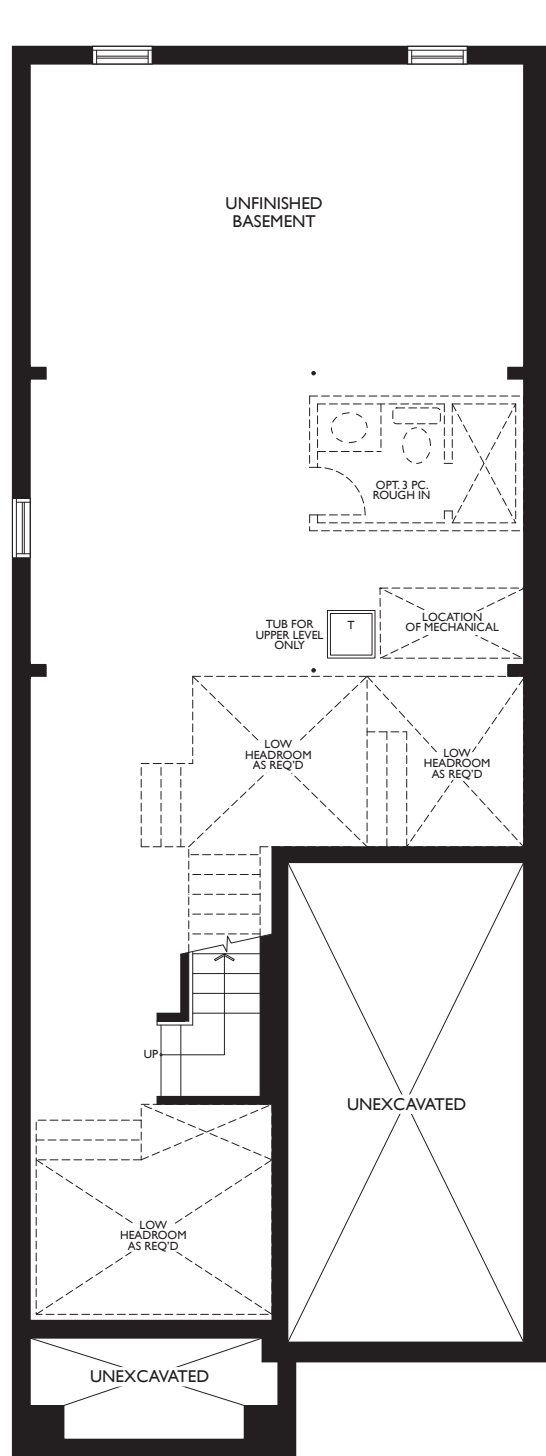
Artist's Concept

ELEVATION A

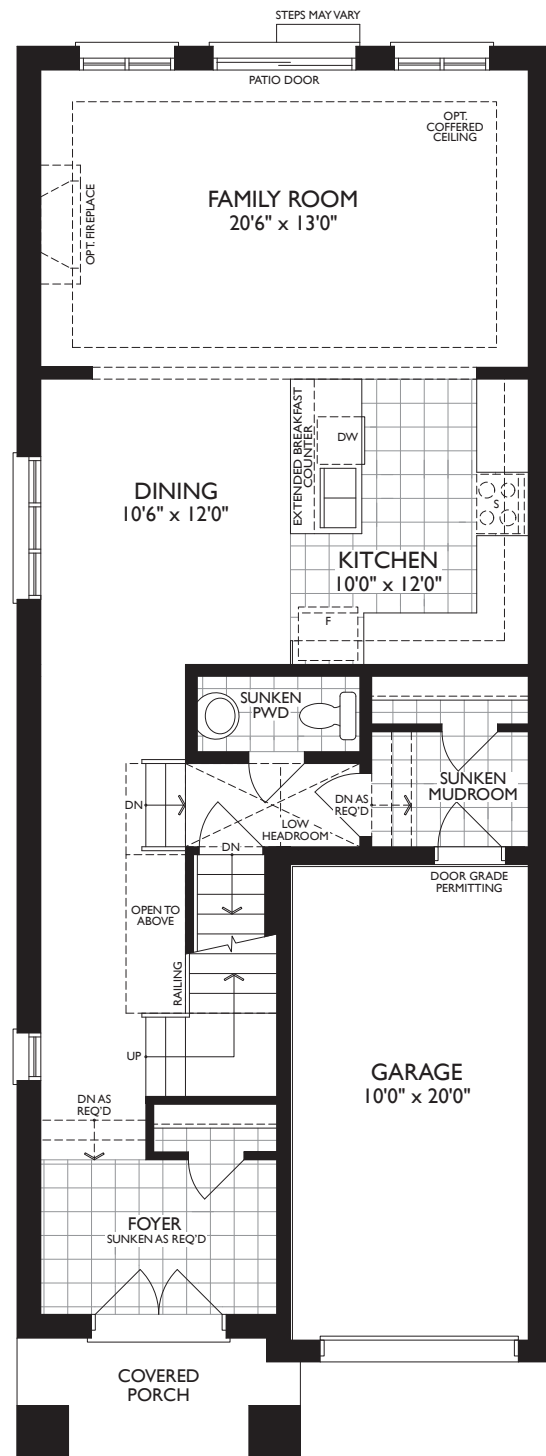


Artist's Concept

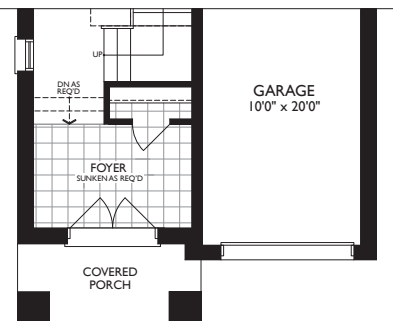
ELEVATION C



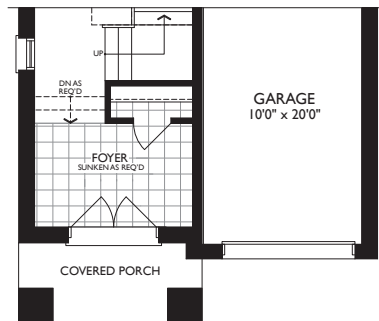
LOWER LEVEL - ELEV. A, B & C



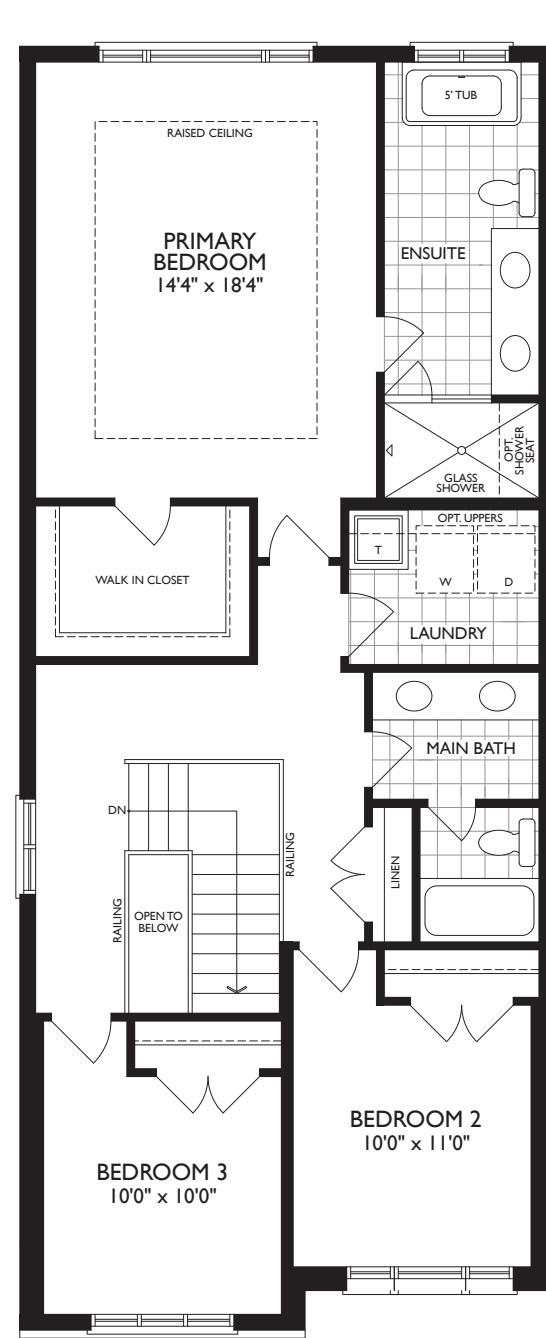
MAIN LEVEL - ELEV. A



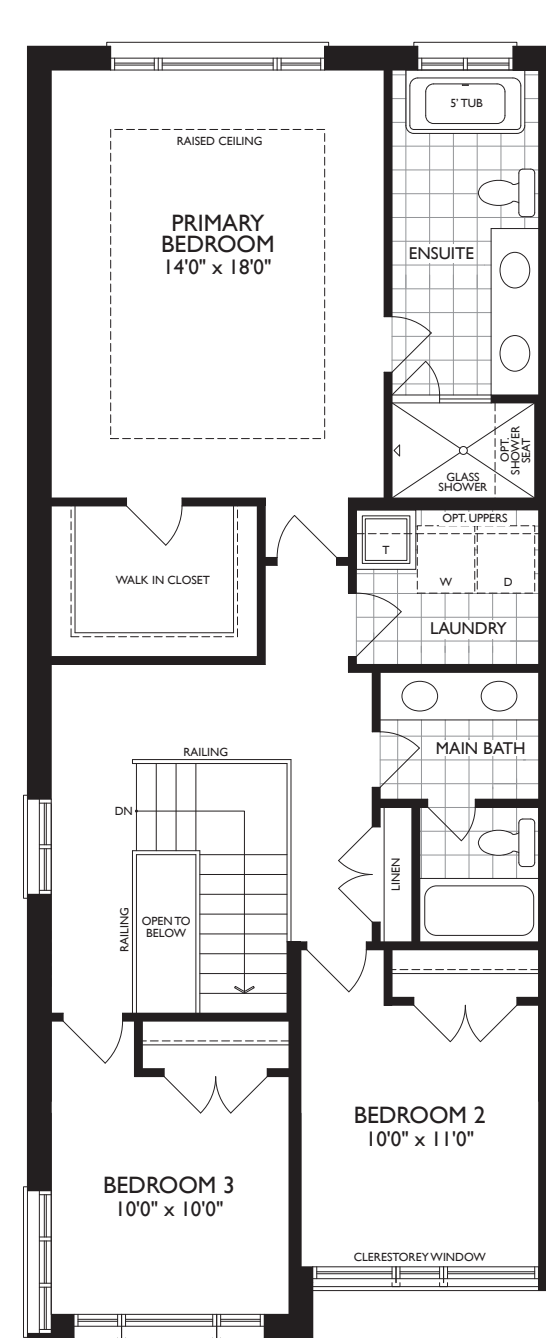
PART. MAIN LEVEL - ELEV. B



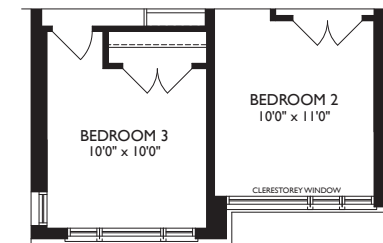
PART. MAIN LEVEL - ELEV. C



UPPER LEVEL - ELEV. A



UPPER LEVEL - ELEV. B



PART. UPPER LEVEL - ELEV. C

30' COLLECTION

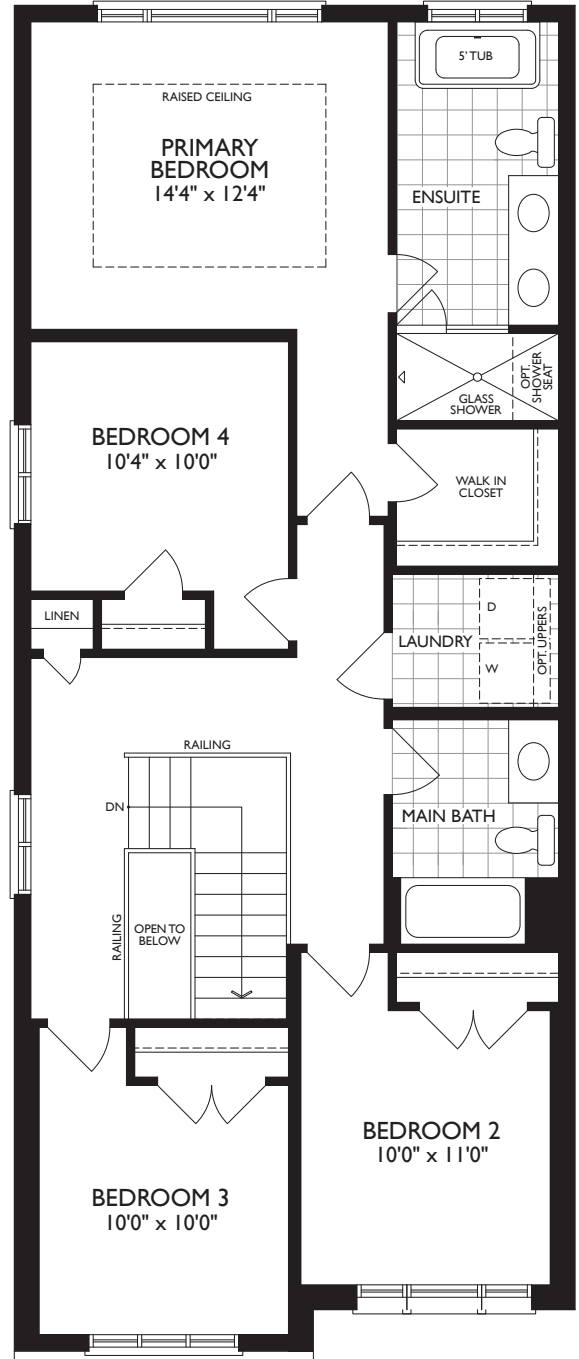
THE JUNIPER

ELEV. A & B | 2188 SQ FT • ELEV. C | 2189 SQ FT

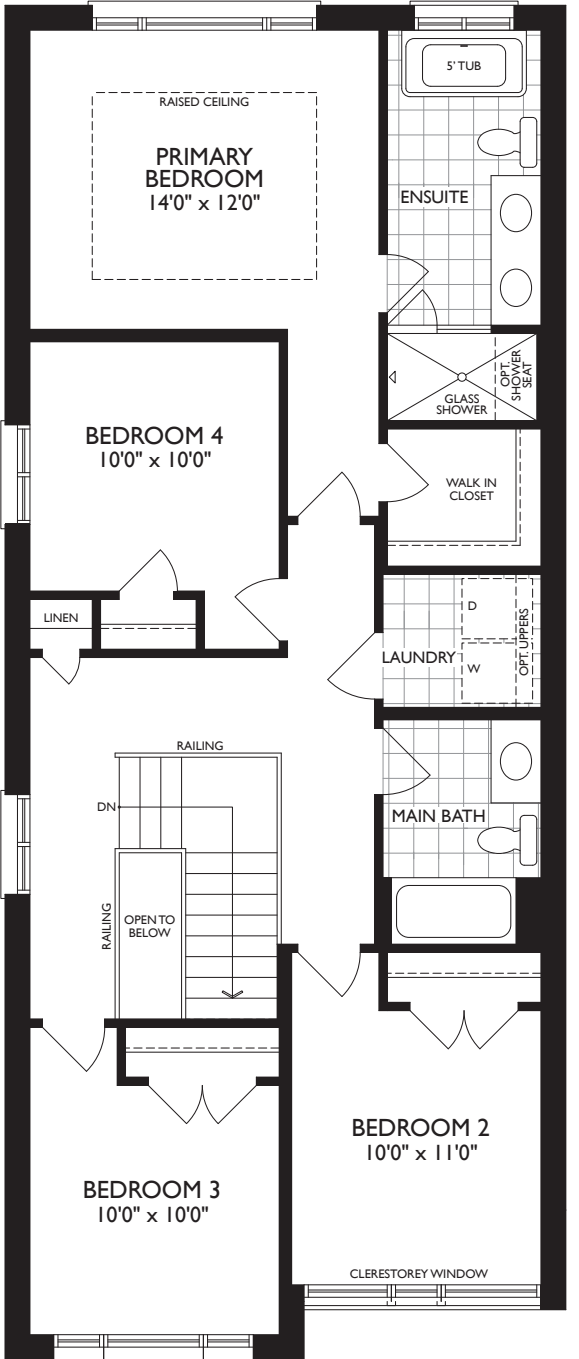
Dimensions, specifications, layouts and materials are approximate only, may vary, and are subject to change as provided in the Agreement of Purchase & Sale. All representative square footage include applicable finished lower level and open to below and above areas. Square footage varies according to architectural style. Plans may be reversed. Illustrations are artist's concept. Elevation C partial floorplans apply to Elevation B full floor plan dimensions. E. & O.E. March 2024. 3004



# OPTIONAL FLOORPLANS



OPT. UPPER LEVEL  
4 BEDROOM - ELEV. A



OPT. UPPER LEVEL  
4 BEDROOM - ELEV. B



PART. OPT. UPPER LEVEL  
4 BEDROOM - ELEV. C  
SIMILAR TO ELEV. B



## THE JUNIPER

OPT. ELEV. A & B | 2188 SQ FT • ELEV. C | 2189 SQ FT

Dimensions, specifications, layouts and materials are approximate only, may vary, and are subject to change as provided in the Agreement of Purchase & Sale. All representative square footage include applicable finished lower level and open to below and above areas. Square footage varies according to architectural style. Plans may be reversed. Illustrations are artist's concept. Elevation C partial floorplans apply to Elevation B full floor plan dimensions. E. & O.E. March 2024. 3004

